

MSC09450 Headlight Adapter Installation Procedure

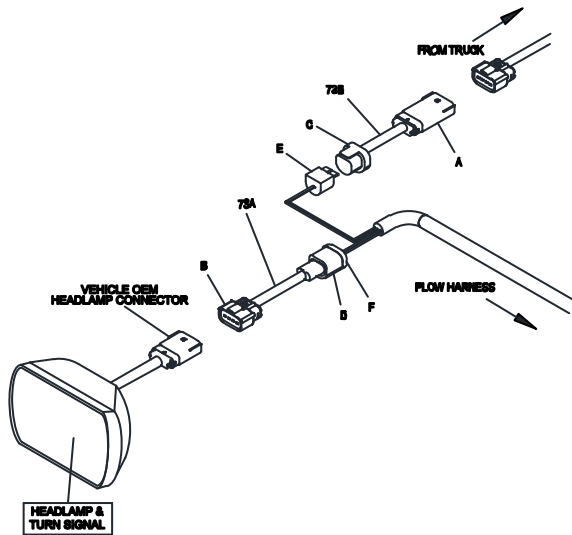


Figure 1. Ford F150 Headlight Adapter Installation G10876

This Installation Procedure is for 2015 & Newer Ford F-150 trucks with Halogen Headlights.

1. Locate and disconnect vehicle OEM headlight harness on Driver Side of vehicle.
2. Connect plug (A) of Headlight Adapter (73A) into the vehicle driver side OEM headlight harness.
3. Connect plug (B) of Headlight Adapter (73A) into the vehicle Driver Side headlight.
4. Connect blue plastic connector (C) of Headlight Adapter (73A) into Driver Side black rubber connector (E) from Plow Harness.
5. Connect black rubber connector (D) of Headlight Adapter (73A) into Driver Side blue plastic connector (F) from Plow Harness.
6. Repeat steps 1-6 for Passenger Side Headlight Adapter (73B).
7. Connect Turn Signals as instructed in Turn Signal Relay Kit (MSC09991).

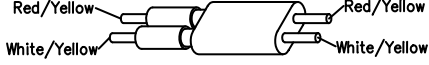
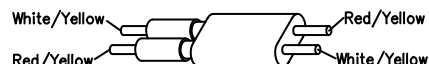
<p>Use Standard Orientation For: *All Ford Models *All 1988 & Newer GM Models *All Dodge Models with 4 Headlight System *All 2003 & Newer Dodge Models</p>	<p>Standard Orientation</p>  <p>Red/Yellow White/Yellow</p>
<p>Use Reverse Orientation For: *1994 - 2002 Dodge Models with 2 Headlight System (9004 Bulb) *1987 & Older GM Models with 4 Headlight System</p>	<p>Reverse Orientation</p>  <p>White/Yellow Red/Yellow</p>

Figure 2. Vehicle Option Connector

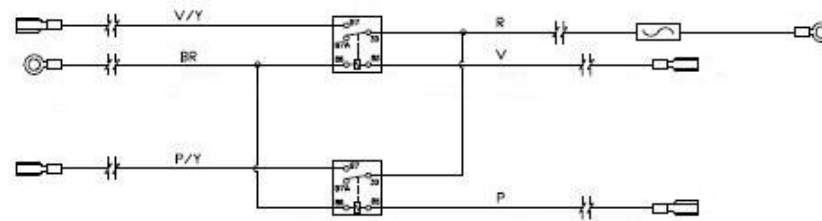
G10202

8. Locate vehicle option connector. Align the connector so that the wire colors are positioned to match the vehicle it is installed on. This is illustrated in Figure 2.

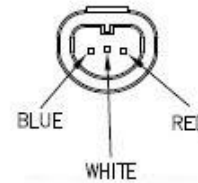
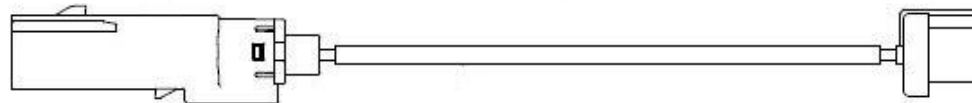
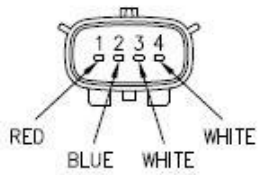
13-Pin Headlight Adapter

2015 & Newer Ford F150

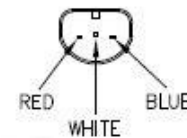
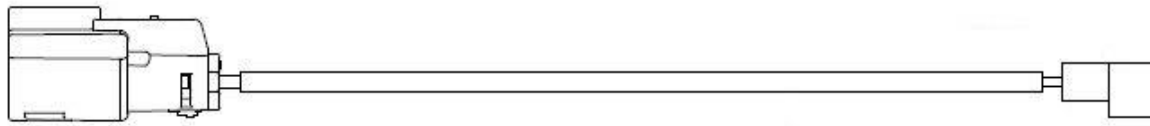
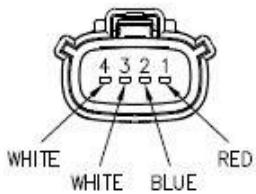
MSC09450



RELAY
ASSEMBLY
(1) REQUIRED



HEADLIGHT
ADAPTOR 1
(2) REQUIRED



HEADLIGHT
ADAPTOR 2
(2) REQUIRED